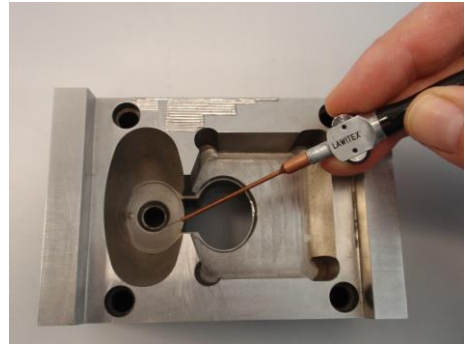


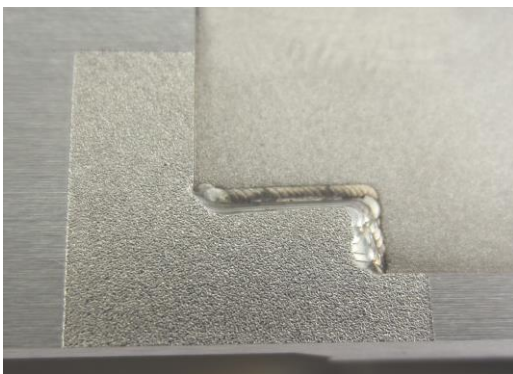


## **New ! LAWI 62 EROD** *the special wire for subsequently eroded surfaces*

Martensitic Cr filler metal with lowered C-content and added stabilizing elements. Especially developed for repairs of GRP injections and blow molded plastic, as well as for their insets which are to be eroded after welding.



Transitions and differences in colour are no more visible if used properly. The weld is rust- and wear-resistant, however can not be chromium-plated! Hardness 1-st layer approx. 45-55 HRC, depending on the extent of mingling and diameter of the wire (energy). Hardenable up to approx. 60 HRC.



*Crack free eroded surface  
welded with LAWI 62 EROD*

